

BLAZING TECHNOLOGIES ENGINEERING APPROVED  
VENDOR - PURCHASED

MERCURY ELECTRONICS  
31 NORTH PERSHING AVE.  
YORK, PA 17405

INDUSTRIAL HARNESS CO.  
100 OUTLOOK LANE  
SHIPPENSBURG, PA 17257

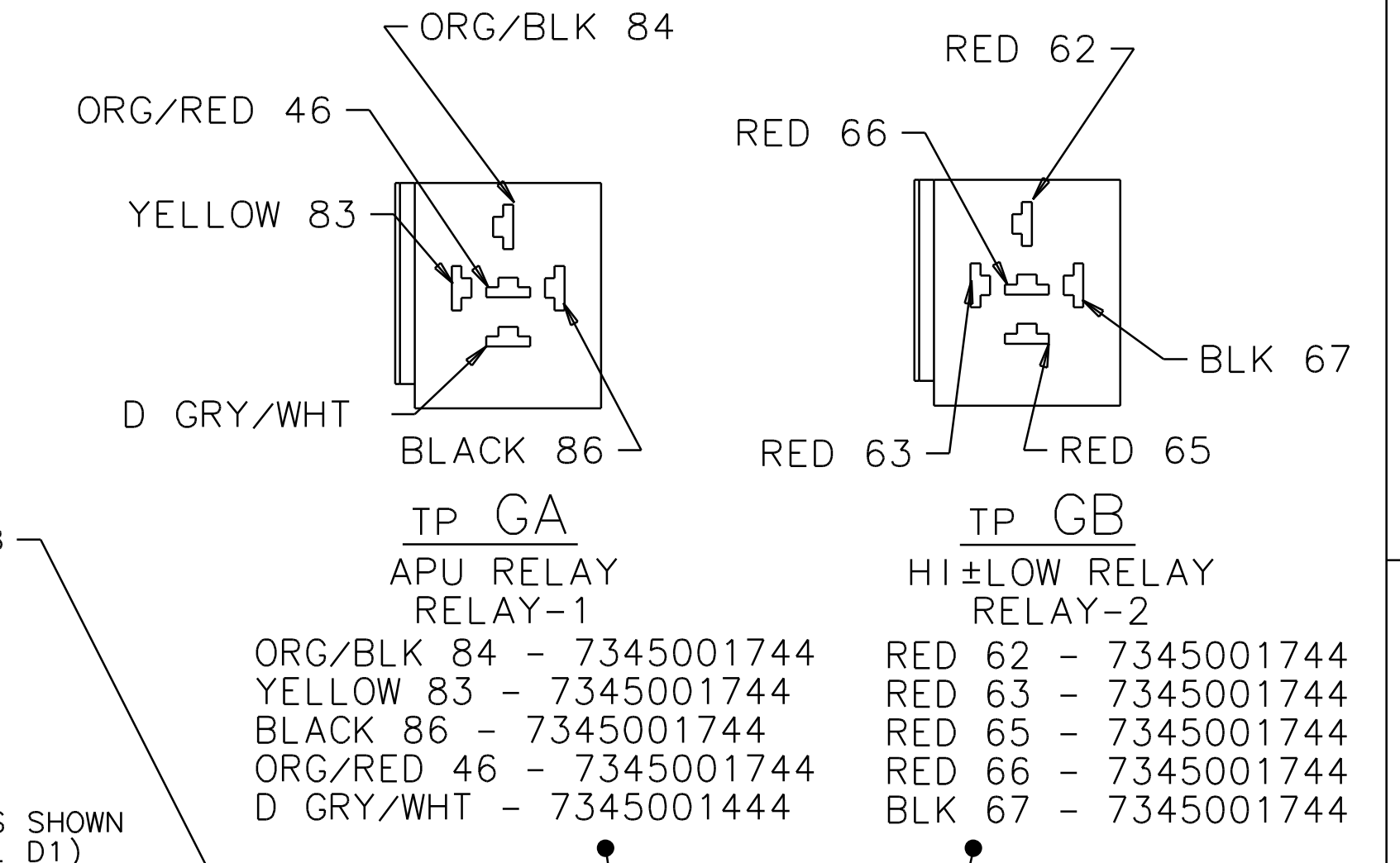
REV	DATE	DESCRIPTION	BY
1	07/31/03	ISSUE	BLAZING

TERMINAL BLOCK - T1  
(CABLE COLOR NUMBER)

	1	2	3	4
A	C GRN/BLK D GRN/BLK			RED 34 RED 38
B	C GRN D GRN			RED 39 RED 38
C	C ORG RED 20	D ORG		RED 40 RED 39
D	D ORG/WHT RED 17	C ORG/WHT		RED 41 RED 40
E	C PUR/WHT D PUR/WHT			RED 51 RED 52
F	RED 20			RED 52
G	RED 17			RED 52
H	RED 49 RED 48			ORG/RED 45 ORG/RED 46
I	D BRN/WHT WHT/BLK 24	C BRN/WHT		RED 42 RED 41
J	C GRN/WHT			RED 49
K	C RED/BLK			ORG/BLK 84
L				
M				
N	D BLK/WHT BLK/WHT 18	C BLK/WHT		RED 43 RED 42
O	C BLU/WHT WHT 21	A WHT		B WHT BLU/WHT 15
P	C GRN/WHT RED 31			RED 44 RED 43
Q	RED 30 RED 31	D GRN/WHT		RED 44 RED 43
R	C GREY RED 27			RED 56 RED 44
S	RED 27 RED 26	D GREY		RED 56 RED 44
T	C GRN/YLW WHT 87		A BLK D BLK	BLK 36 BLK 35 BLK 225

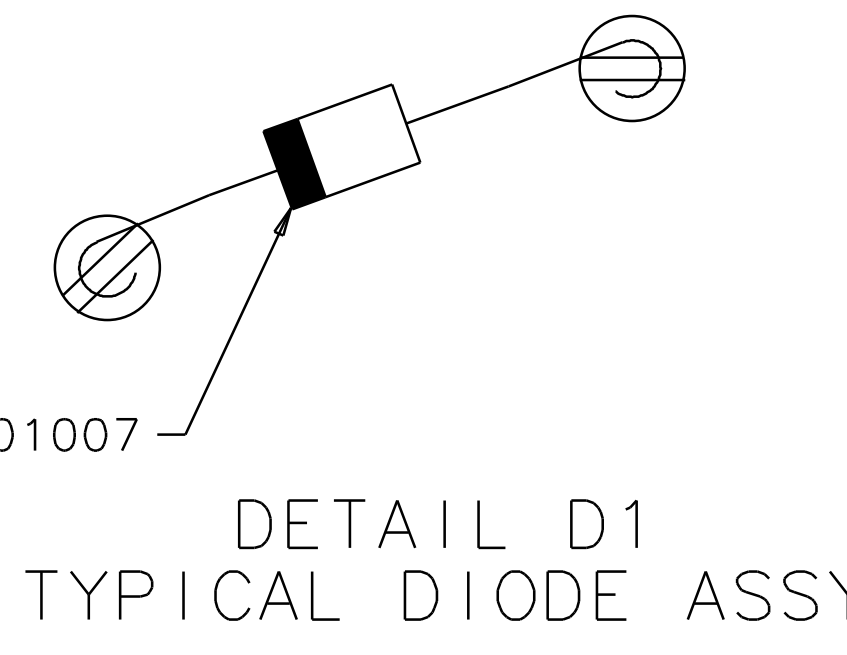
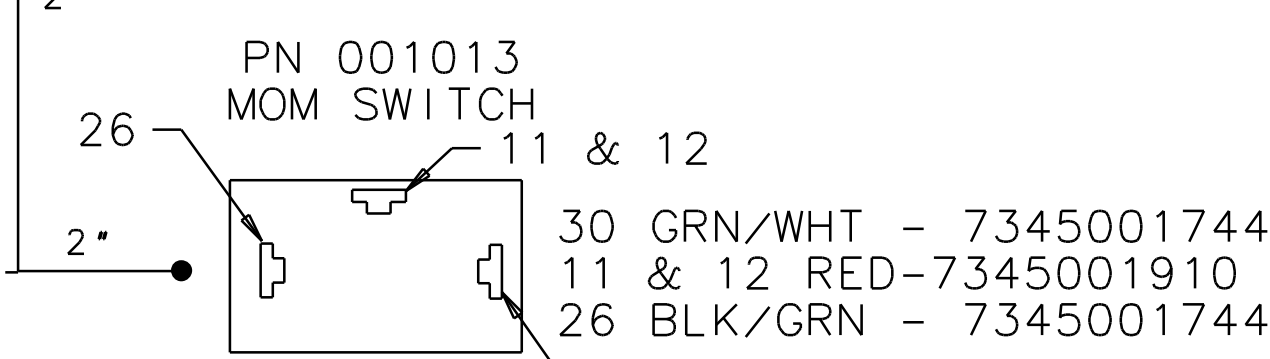
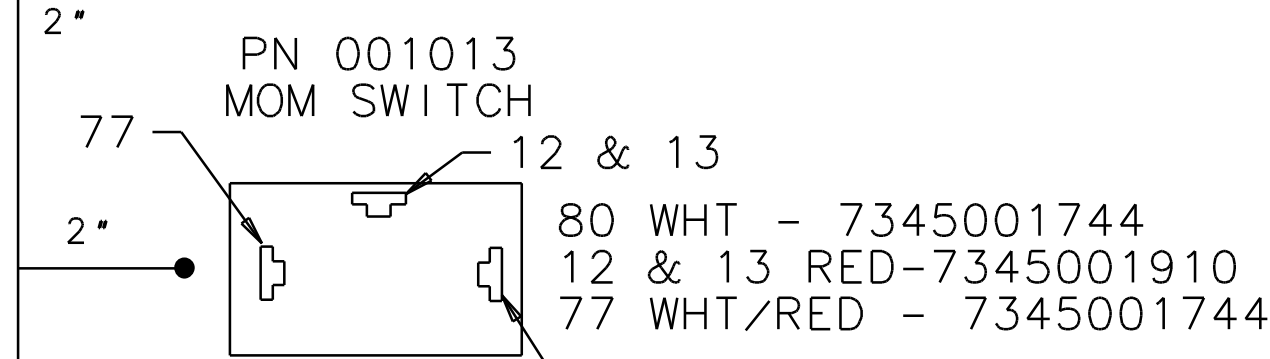
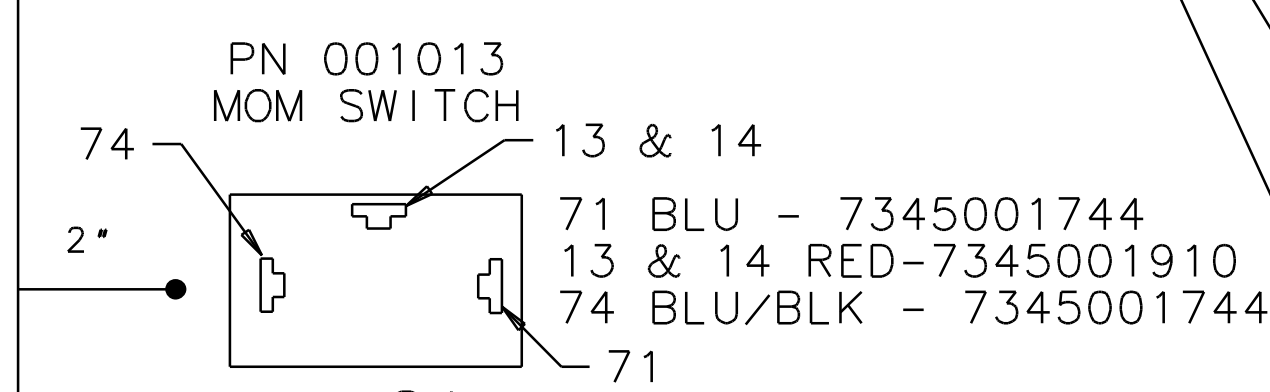
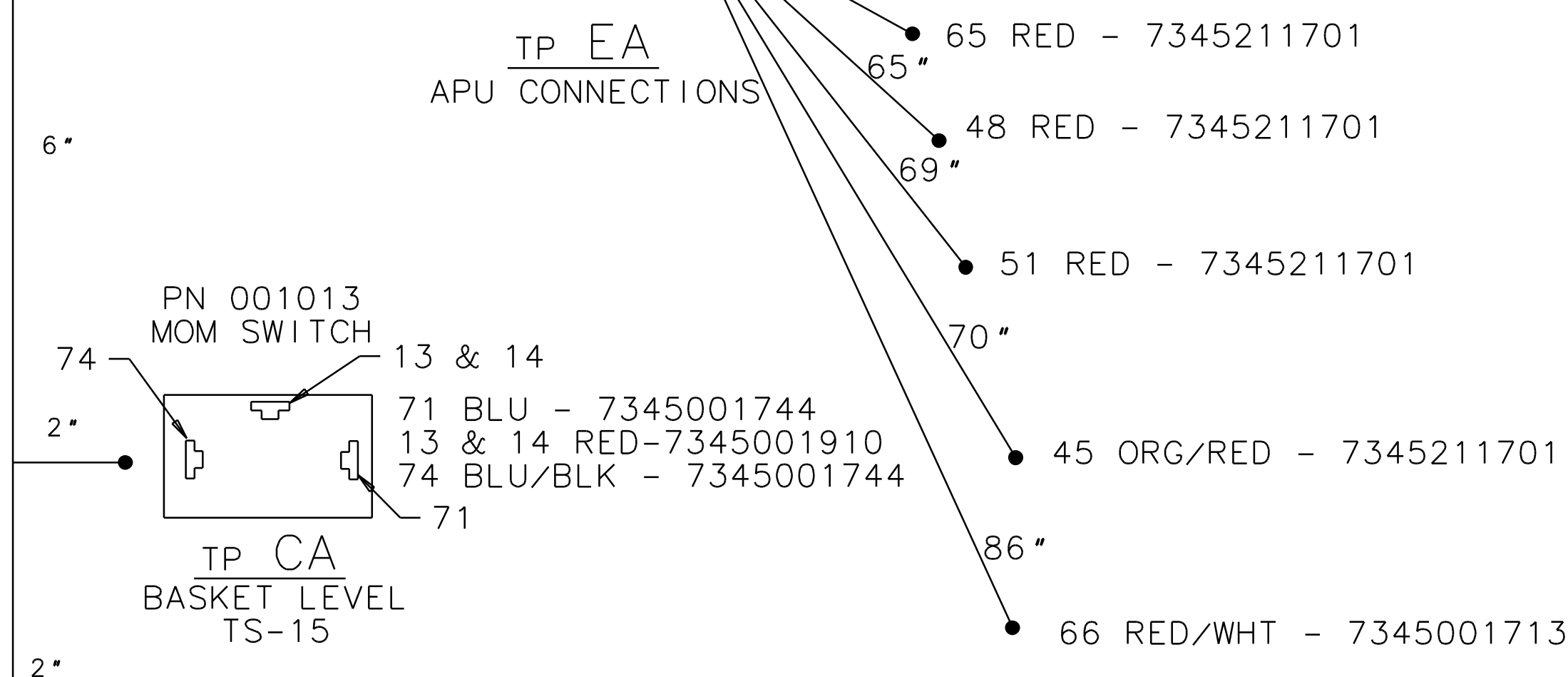
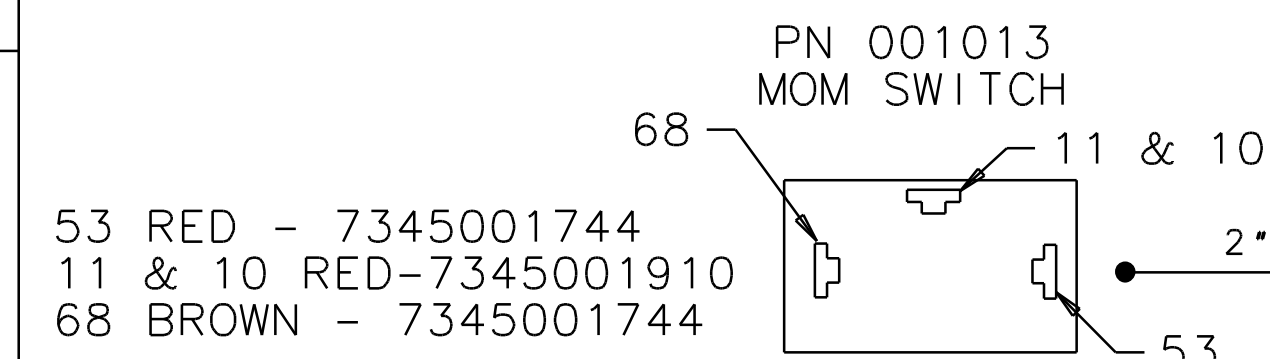
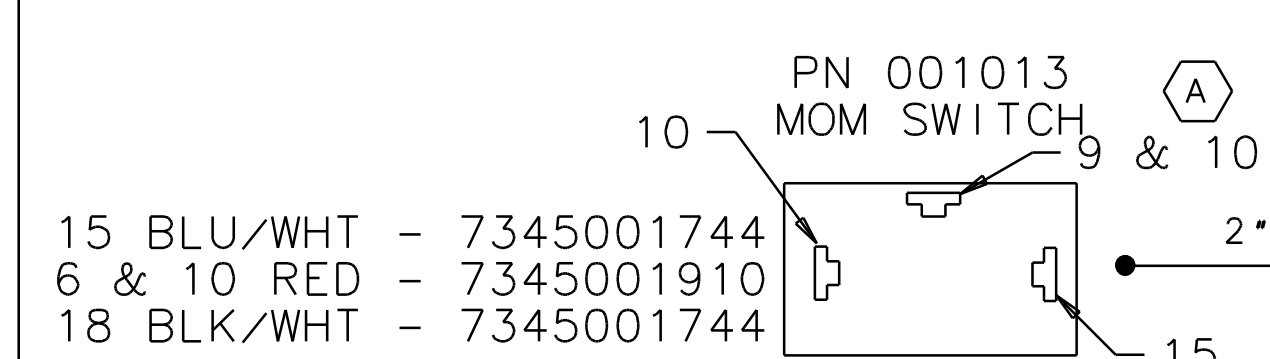
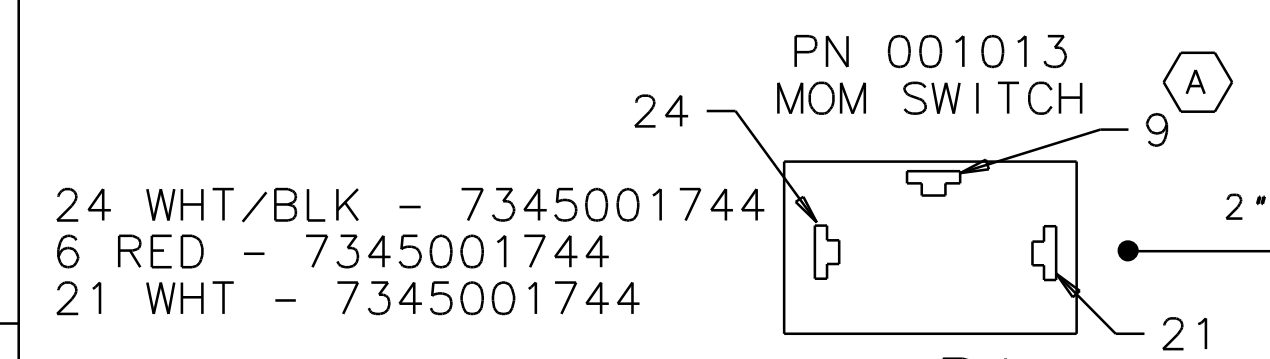
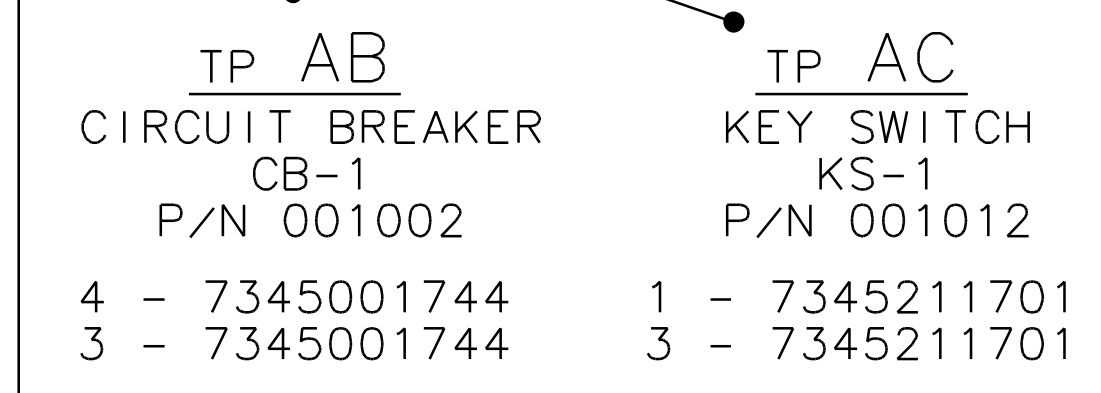
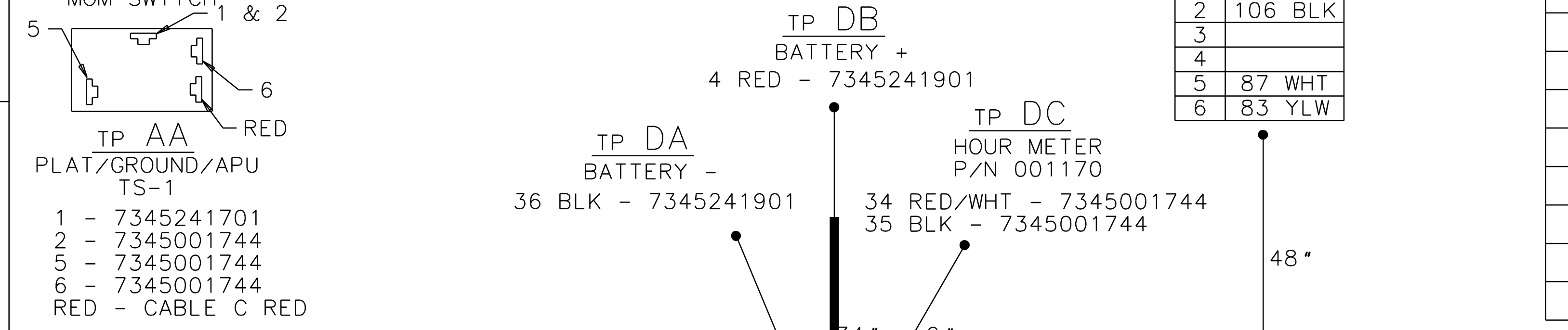
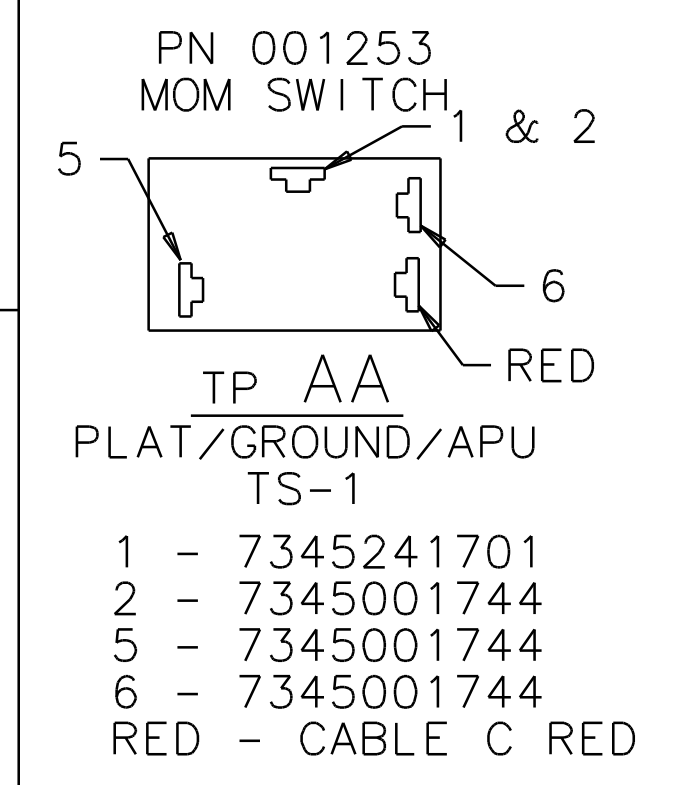
TERMINAL BLOCK - T2  
(CABLE COLOR NUMBER)

	1	2	3	4
U	D YELLOW RED 53	C YELLOW		RED 57 RED 56
V	C BROWN BRN 68	D BROWN		RED 58 RED 57
W	D BLUE BLU 71	C BLUE		RED 58 RED 59
X	D BLU/BLK BLU/BLK 74	C BLU/BLK		RED 59 RED 60
Y	D GRN/YEL WHT/RED 77	C RED/WHT		RED 60 RED 61
Z	D WHITE WHITE 80	C PNK/WHT		RED 61 RED 62
AA			PINK	RED 107 RED 63 RED 8
AB	RED 107 RED 5			RED 8
AC	RED 6			RED 14 RED 8
AD	B BLK BLK 67	BLK 228	BLK 228	C BLU/WHT C BLK BLK 228



TP FA  
TILT SENSOR  
PLUG (6S) - 7709000018  
PIN (20-14) - 7689000018

CAVWIRE #	
1	2 PNK
2	106 BLK
3	
4	
5	87 WHT
6	83 YLW



WIRE CHART

WIRE#	TYPE	COLOR	SIZE	LENGTH	TP	TP
1	SXL	RED	16	10 IN	AA	AC
2	SXL	PINK	16	72 IN	AA	FA
3	SXL	RED	16	9 IN	AB	AC
4	SXL	RED	12	52 IN	AB	DB
5	SXL	RED	16	36 IN	AA	T2/AB-1
6	SXL	RED	16	36 IN	AA	T2/AC-1
8	SXL	RED	16	4 IN	T2/AC-4	T2/AB-4
9	SXL	RED	16	6 IN	BA	BB
10	SXL	RED	16	6 IN	BB	BC
11	SXL	RED	16	6 IN	BC	CC
12	SXL	RED	16	6 IN	CC	CB
13	SXL	RED	16	6 IN	CB	CA
14	SXL	RED	16	30 IN	CA	T2/AC-4
15	SXL	BLU/WHT	16	28 IN	BB	T1/O-4
17	SXL	RED	16	5 IN	T1/D-1	T1/G-1
18	SXL	BLK/WHT	16	15 IN	BB	T1/N-1
20	SXL	RED	16	7 IN	T1/C-1	T1/F-1
21	SXL	WHT	16	12 IN	BA	T1/O-1
24	SXL	WHT/BLK	16	10 IN	BA	T1/L-1
26	SXL	BLK/BRN	16	17 IN	CC	T1/S-1
27	SXL	RED	16	4 IN	T1/R-1	T1/S-1
30	SXL	GRN/WHT	16	15 IN	CC	T1/Q-1
31	SXL	RED	16	4 IN	T1/P-1	T1/Q-1
34	SXL	RED/WHT	16	30 IN	T1/A-4	DC
35	SXL	BLK	16	18 IN	T1/T-4	DC
36	SXL	BLK	12	18 IN	T1/T-4	DA
38	SXL	RED	16	4 IN	T1/A-4	T1/B-4
106	SXL	BLK	16	53 IN	T2/AD-4	FA
107	SXL	RED	16	22 IN	T2/AB-1	T2/AA-4
225	SXL	BLK	16	16 IN	T2/AD-4	T1/T-4
228	SXL	BLK	16	3 IN	T2/AD-3	T2/AD-2

WIRE CHART

WIRE#	TYPE	COLOR	SIZE	LENGTH	TP	TP
39	SXL	RED	16	4 IN	T1/B-4	T1/C-4
40	SXL	RED	16	4 IN	T1/C-4	T1/D-4
41	SXL	RED	16	7 IN	T1/D-4	T1/I-4
42	SXL	RED	16	6 IN	T1/I-4	T1/N-4
43	SXL	RED	16	6 IN	T1/N-4	T1/O-4
44	SXL	RED	16	5 IN	T1/Q-4	T1/S-4
45	SXL	ORG/RED	16	82 IN	T1/H-4	EA
46	SXL	ORG/RED	16	15 IN	GA	T1/H-4
48	SXL	RED	16	83 IN	T1/H-1	EA
49	SXL	RED	16	25 IN	T1/H-1	T1/J-4
51	SXL	RED	16	83 IN	T1/F-4	EA
52	SXL	RED	16	4 IN	T1/F-4	T1/G-4
53	SXL	RED	16	41 IN	BC	T2/U-1
56	SXL	RED	16	20 IN	T2/U-4	T1/S-4
57	SXL	RED	16	4 IN	T2/U-4	T2/V-4
58	SXL	RED	16	4 IN	T2/V-4	T2/W-4
59	SXL	RED	16	4 IN	T2/W-4	T2/X-4
60	SXL	RED	16	4 IN	T2/X-4	T2/Y-4
61	SXL	RED	16	4 IN	T2/Y-4	T2/Z-4
62	SXL	RED	16	12 IN	GB	T2/Z-4
63	SXL	RED	16	12 IN	GB	T2/AA-4
65	SXL	RED	16	56 IN	GB	EA
66	SXL	RED/WHT	16	92 IN	GB	EA
67	SXL	BLK	16	14 IN	GB	T2/AD-1
68	SXL	BRN	16	39 IN	BC	T2/V-1
71	SXL	BLU	16	30 IN	CA	T2/W-1
74	SXL	BRU/BLK	16	30 IN	CA	T2/X-1
77	SXL	WHT/RED	16	32 IN	CB	T2/Y-1
80	SXL	WHT	16	31 IN	CB	T2/Z-1
83	SXL	YLW	16	52 IN	GA	FA
84	SXL	ORG/BLK	16	14 IN	GA	T1/K-4
86	SXL	BLK	16	12 IN	GA	T2/AD-4
87	SXL	WHT	16	57 IN	T1/T-1	FA

WIRE LENGTH TOTALS

ITEM#	TYPE	COLOR	SIZE	TOTALS
1	SXL	VARIOUS	16	1378 IN
2	SXL	VARIOUS	12	70 IN

NOTE:  
COVER ALL SPLICES WITH  
MELTABLE LINER HEATSHRINK

NOTE: BACKFILL ALL RECEPTACLE WIRE TERMINALS  
WITH A NON-CORROSIVE ELECTRICAL LUBRICANT.

UNLESS OTHERWISE SPECIFIED  
DIMENSIONS ARE IN INCHES  
TOLERANCES:  
FRACTIONS DECIMALS ANGLES  
1/16 1/32 1/64 1/8 1/4 1/2 3/4 1 1 1/2 2 3 4 5 6 8 10 12 16 20 24 30 36 48 60 72 96 120 144 180 240 300 360  
DO NOT SCALE DRAWING  
SHEET 01 OF 01

3RD ANGLE PROJECTION

BLAZING TECHNOLOGIES  
INCORPORATED

HARNESS ASSY  
SB35

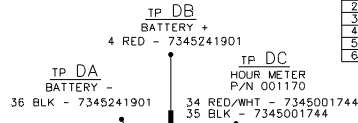
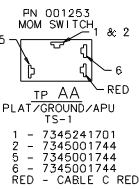
DATE: 07/31/03

SCALE: NONE

BLAZING TECHNOLOGIES ENGINEERING APPROVED  
VENDOR - PURCHASED

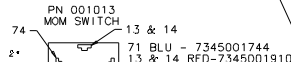
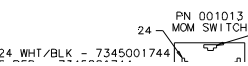
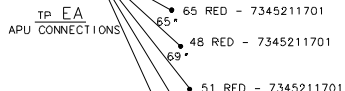
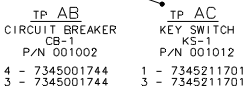
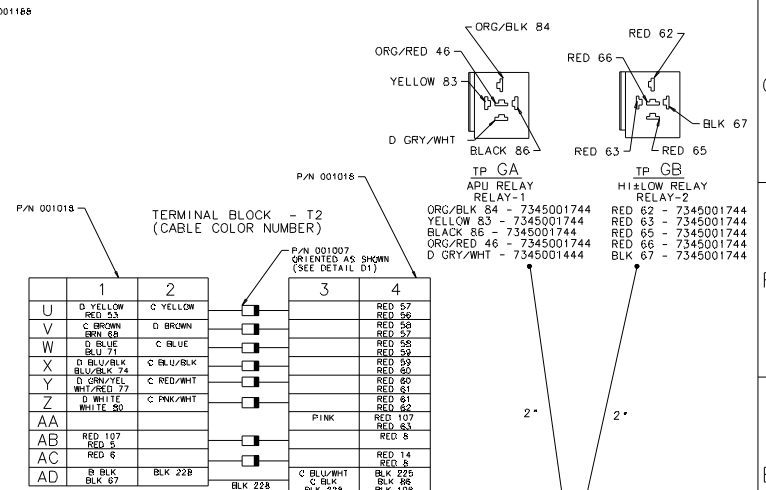
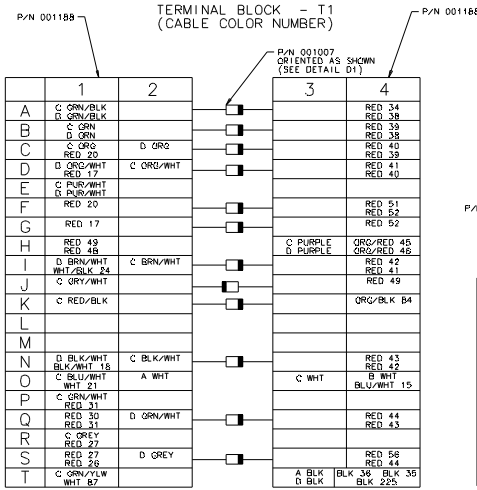
MERCURY ELECTRONICS  
31 NORTH PERSHING AVE.  
YORK, PA 17405

INDUSTRIAL HARNESS CO.  
100 OUTLOOK LANE  
SHIPPENSBURG, PA 17257



TP FA  
TILT SENSOR  
PLUG (65) - 7709000018  
PIN (20-14) - 7689000018

CAV WIRE #	WIRE COLOR
1	2 PNK
2	106 BLK
3	
4	
5	87 WHT
6	83 YLW



45 ORG/RED 7345001701